

GARDEN REVIVAL
GARDEN CLASSIC
BOLLARD
UP&DOWN
DOWNLIGHT
IN-GROUND
BRICKLIGHT
FLOODLIGHT
BULKHEAD
SOLAR
URBAN CLASSIC
URBAN REVIVAL
URBAN MODERN
POST
LAMPS

MARY

SMALL SIZE



E27 square lantern in classic style, made of shockproof resin material, UV-rays stabilized, rust and corrosion-free. Modular construction suitable for post top, hanging and wall installation. Supplied as optional with TÜV-CB certified, long-life and efficient **LED lamps** suitable for outdoor use. Insulation class II, protection rating IP55.

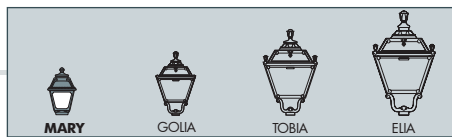
Lanterna quadra E27 in stile classico, realizzata in resina antiurto, stabilizzata ai raggi UV, inattaccabile da ruggine e corrosione. Idonea per il montaggio a palo, a sospensione o a parete. Fornita anche completa di lampadine LED adatte ad uso in ambiente esterno, certificate TÜV-CB, di lunga durata ed elevata efficienza. Classe di isolamento II, grado di protezione IP55.

6,5W 800 lm	8,5W 920 lm	11W 1200 lm	
2700 K	2700 K	4000 K	6500 K
+80°C -30°C	90% HUMIDITY	VOLTAGE SURGE RESISTANT	
INDOOR & OUTDOOR USE			



Q18.110.F1R

MADE IN ITALY



MARY - LANTERN COMPONENTS

IP55



Decorative **PINNACLE** to be mounted on the roof top for post installation or on the lantern base for hanging installation.

PINNACOLO decorativo applicabile alla sommità del tetto (montaggio a palo) o sulla base della gabbia (montaggio a sospensione).



Lantern **ROOF** made of shockproof resin material, UV rays stabilized and supplied with E27 lampholder. Tool-free opening for relamping and maintenance.

TETTO realizzato in resina antiurto, stabilizzata ai raggi UV, fornito completo di portalampana E27. Rimovibile senza l'ausilio di attrezzi per manutenzione e cambio lampadina.



DIFFUSER made of UV stabilized polymethylmethacrylate (PMMA) resistant to yellowing process due to sun rays, available in clear or opal color and provided with recess for power cable supply. Made of one piece only and closed at the bottom to ensure high protection against external agents (IP 55).

DIFFUSORE in polimetilmetacrilato (PMMA) resistente al processo di ingiallimento dovuto ai raggi solari, disponibile in colore trasparente od opale e provvisto di scanalatura per il passaggio del cavo di alimentazione. Realizzato in un pezzo unico e con fondo chiuso per garantire un alto livello di protezione contro gli agenti esterni (IP 55).



CAGE made of shockproof resin material, UV-rays stabilized, rust and corrosion-free.

GABBIA realizzata in resina antiurto, stabilizzata ai raggi UV, inattaccabile da ruggine e corrosione.



Dimensions and weight

Height: 290 mm
Width: 180 mm
Depth: 180 mm
Weight: 1 Kg

Moulded colours:

Black White

Painted colours:

Antique green Antique bronze

Diffuser PMMA:

Clear Opal

E27 FILAMENT



E27 CCT SET(*)



100 - 240 V

*ADD SUFFIX

suitable lamps: CFL-LED max 150 mm		E27 lampholder only		.E27
LAMP	POWER	LUMINOUS FLUX UP TO	COLOUR TEMP.	
FILAMENT LED E27	6,5W	800 lm	2700 K	.F1R
CCT SET LED E27	8,5 W	920 lm	6500 K 4000 K 2700 K	.V1K

- Perfect **MATCHING WITH DECORATIVE LANTERNS.**
- **SUITABLE FOR OUTDOOR USE:** 100-240V driver.
- **360°OMNIDIRECTIONAL LIGHT.**
- **HIGH EFFICIENCY:** 90% ENERGY SAVING.

- **A60 CCT SETTABLE:** 2700K/4000K/6500K.
- **SUITABLE FOR OUTDOOR USE:** 100-240V driver.
- **EYE COMFORT** opal glass.
- **HIGH EFFICIENCY:** >85% ENERGY SAVING.

6,5W filament = **60W incandescent**

8,5W CCT

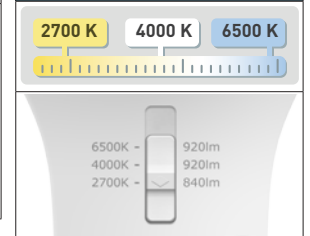
SAVE up to 89%

LED LAMPS



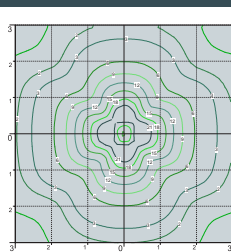
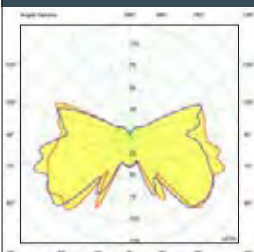
Comply with: EU2019/2015
EU2019/2020
Technical details on page 636.

CCT SETTABLE LED LAMP(*)



CCT switch settable in three different positions, to select the desired Kelvin temperature (2700K/4000K/6500K) and get a customized ambience.

PHOTOMETRIC DATA SAMPLE



MARY lantern clear with Fumagalli Filament Led Lamp 6,5W.

POST height 1mt
6x6mt area: average 6 lux

The photometric data for all the versions are available upon request or on our website.

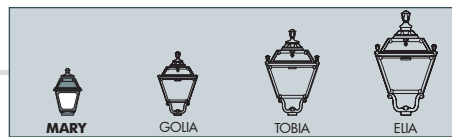
* ADD THESE SUFFIXES TO THE REFERENCES MENTIONED IN THE CATALOGUE

MARY

SMALL SIZE



MADE IN ITALY



BISSO/MARY	
E27 lampholder	Q18.131.E27
6,5W filament	Q18.131.F1R
8,5W CCT set	Q18.131.V1K
Pcs 18 Kg 27,6 mc 0,209	

SICHEM/MARY	
E27 lampholder	Q18.120.E27
6,5W filament	Q18.120.F1R
8,5W CCT set	Q18.120.V1K
Pcs 18 Kg 29,1 mc 0,209	

MARY	
Q18.000	
Pcs 1 Kg 1 mc 0,011	

MIKROLOT/MARY	
E27 lampholder	Q18.110.E27
6,5W filament	Q18.110.F1R
8,5W CCT set	Q18.110.V1K
Pcs 18 Kg 25,4 mc 0,209	

PORPORA/MARY	
E27 lampholder	Q18.141.E27
6,5W filament	Q18.141.F1R
8,5W CCT set	Q18.141.V1K
Pcs 1 Kg 3,5 mc 0,024	

MIZAR/MARY resin	
E27 lampholder	Q18.151.E27
6,5W filament	Q18.151.F1R
8,5W CCT set	Q18.151.V1K
Pcs 1 Kg 2,8 mc 0,044	

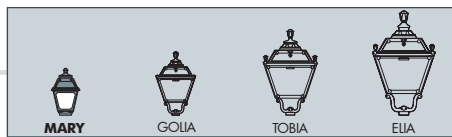
LAMPS POST URBAN MODERN URBAN REVIVAL URBAN CLASSIC SOLAR BULKHEAD FLOODLIGHT BRICKLIGHT IN-GROUND DOWNLIGHT UP&DOWN BOLLARD GARDEN CLASSIC GARDEN REVIVAL

MARY

SMALL SIZE



MADE IN ITALY



ARTU' BISSO/MARY 2+1

E27 lampholder	Q18.158.S21.E27
6,5W filament	Q18.158.S21.F1R
8,5W CCT set	Q18.158.S21.V1K

Pcs 1
Kg 17,5
mc 0,176

ARTU' BISSO/MARY 3+1

E27 lampholder	Q18.158.S31.E27
6,5W filament	Q18.158.S31.F1R
8,5W CCT set	Q18.158.S31.V1K

Pcs 1
Kg 17,9
mc 0,176

GIGI BISSO/MARY 2+1

E27 lampholder	Q18.156.S21.E27
6,5W filament	Q18.156.S21.F1R
8,5W CCT set	Q18.156.S21.V1K

Pcs 1
Kg 18,8
mc 0,182

GIGI BISSO/MARY 3+1

E27 lampholder	Q18.156.S31.E27
6,5W filament	Q18.156.S31.F1R
8,5W CCT set	Q18.156.S31.V1K

Pcs 1
Kg 20,3
mc 0,182

ARTU' BISSO/MARY 2L

E27 lampholder	Q18.158.S20.E27
6,5W filament	Q18.158.S20.F1R
8,5W CCT set	Q18.158.S20.V1K

Pcs 1
Kg 16,5
mc 0,176

ARTU' BISSO/MARY 3L

E27 lampholder	Q18.158.S30.E27
6,5W filament	Q18.158.S30.F1R
8,5W CCT set	Q18.158.S30.V1K

Pcs 1
Kg 17,4
mc 0,176

GIGI BISSO/MARY 2L

E27 lampholder	Q18.156.S20.E27
6,5W filament	Q18.156.S20.F1R
8,5W CCT set	Q18.156.S20.V1K

Pcs 1
Kg 18,4
mc 0,182

GIGI BISSO/MARY 3L

E27 lampholder	Q18.156.S30.E27
6,5W filament	Q18.156.S30.F1R
8,5W CCT set	Q18.156.S30.V1K

Pcs 1
Kg 19,5
mc 0,182